



REPUBLIC OF SLOVENIA
COURT OF AUDIT

AUDIT REPORT

Efficiency of the Ministry of Agriculture, Forestry and Food in adapting agriculture to climate change

Performance audit

Audit period: 1 January 2018 to 30 June 2022



Climate change increasingly affects agriculture

CLIMATE CHANGE

refers to **long-term shifts in weather patterns** caused by natural processes and human activities.

- raising temperatures
- changing precipitation patterns

- extreme weather conditions
- longer growing seasons



ADAPTING AGRICULTURE

reduces vulnerability of agriculture to climate change.

NECESSARY BECAUSE:

- agriculture is **one of the most sensitive sectors**
- only **reducing greenhouse gas emissions*** will not be enough to combat climate change
- climate change has a negative impact on **food self-sufficiency***

*The Court of Audit has already implemented audits: [reducing greenhouse gas emissions](#) and [food self-sufficiency](#).

The Ministry failed to pay enough attention to strategic planning

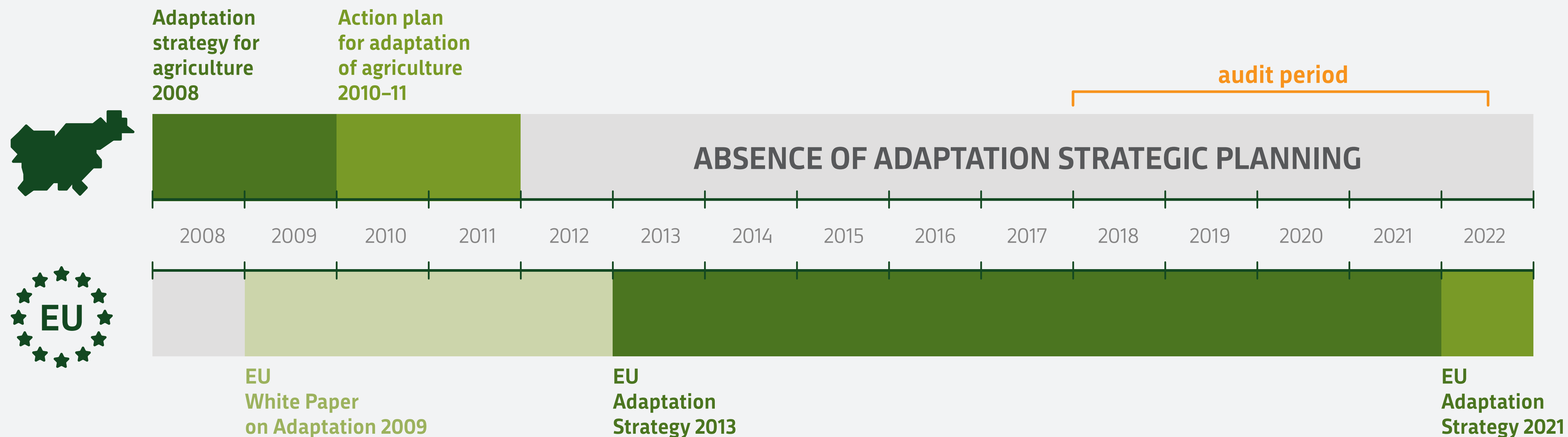
- The Ministry **failed to monitor** impacts of climate change on agriculture. It had only the data about damage caused by natural disasters.
- The Ministry **failed to develop vulnerability assessment** which is the basis for the strategy and it **failed to develop the adaptation strategy** for agriculture.
- **Measures were planned** in other documents, mainly **to achieve other objectives** of the agricultural policy.

CONSEQUENCES:

- Adapting agriculture to climate change is **not planned** fully and systematically.
- **Possible differences** in vulnerability of agriculture across Slovenia are **not considered**.



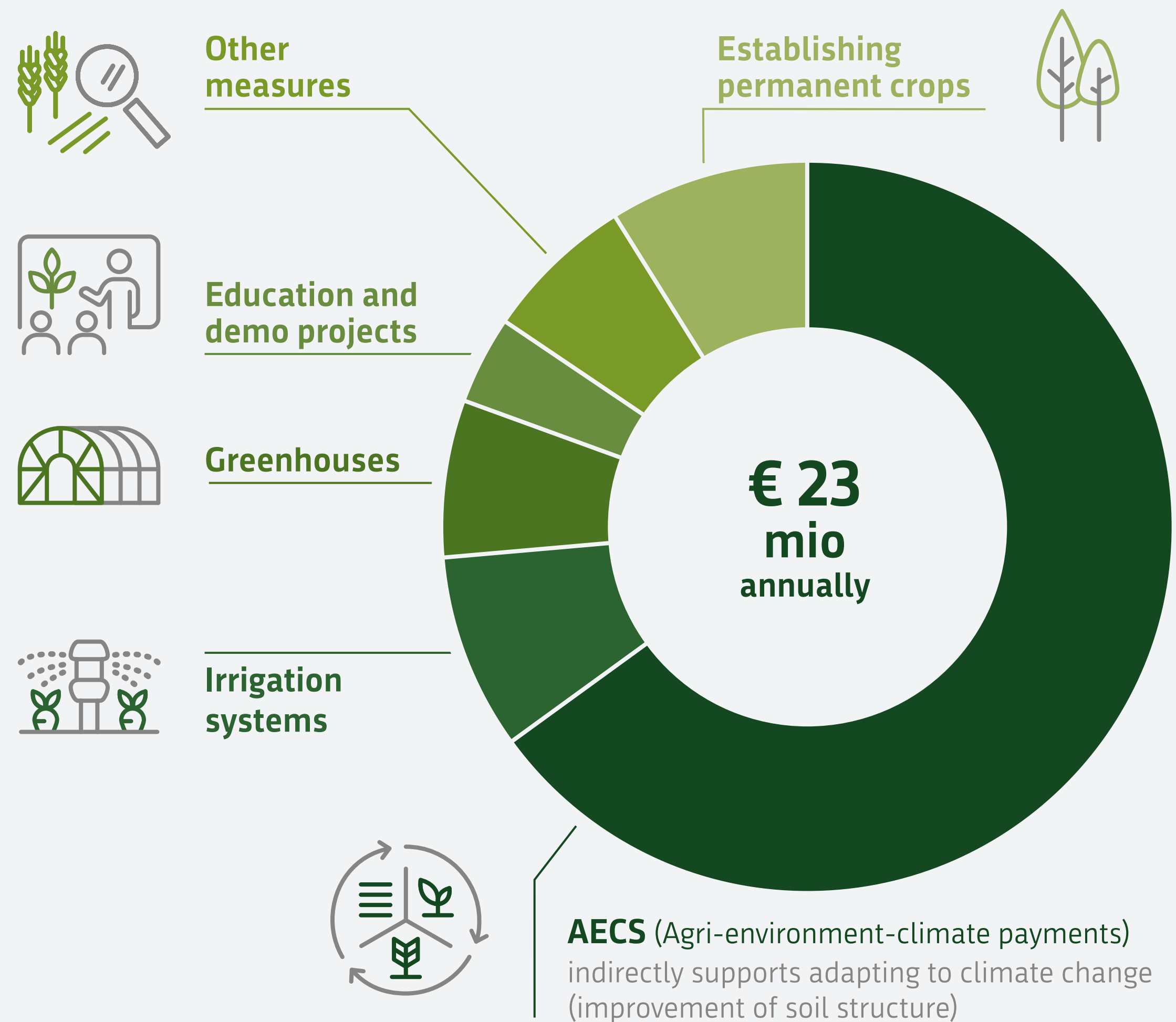
There is a risk that **ADAPTATION WILL BE MORE EXPENSIVE!**



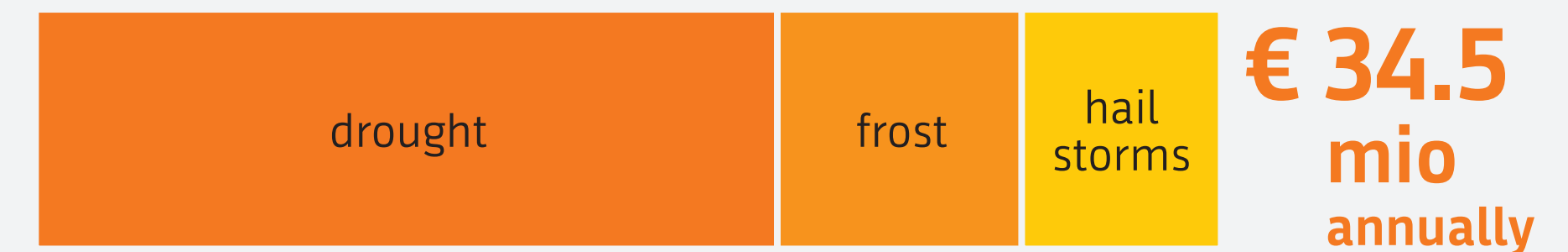
Measures were implemented despite the absence of strategic planning

2015–2021 agricultural adaptation measures

(rural development programme)



Assessed scope of damage 2003–21



Approved State aid 2003–21

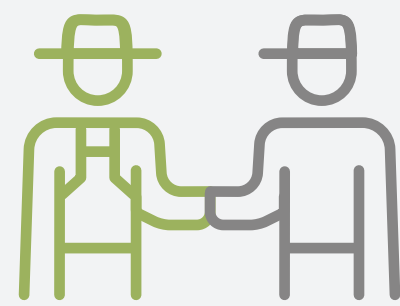


- +** Most of the funds were allocated for **adapting to drought**, which causes most damage in the long term.
- +** More funds were allocated for **preventive measures** than **approved State aid** for damage
→ but the **scope of funds** for adapting is still **smaller than the damage caused**.
- The Ministry **failed to fully monitor** implementation of measures and **failed to measure** efficiency of implemented measures.

Generating and transferring knowledge can be improved

+ The Ministry financed **research** and **advisory service** for farmers.

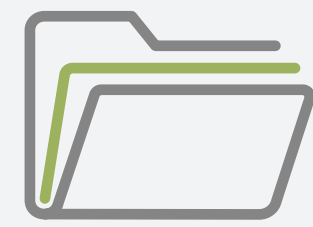
RESEARCH



9 adaptation related

European Innovation Partnerships (EIP)

2018-2022



8 indirectly linked

targeted research projects

2018-2022



+ **2** directly linked

ADVISORY SERVICE:



31

trainings for farmers per year

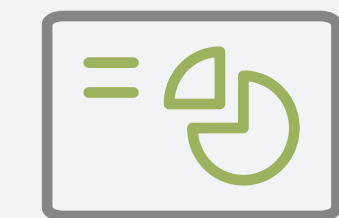
2018-2020



2,638 hr

of consultation to farmers per year

2018-2020



84

developed materials and articles

2018-2020

- **Priorities** for research **not defined**.

○ **The EIP-AGRI** which enables better knowledge transfer is financed by the Ministry **only from 2022**.

○ Knowledge transfer to farmers and connecting partners **must be improved**.

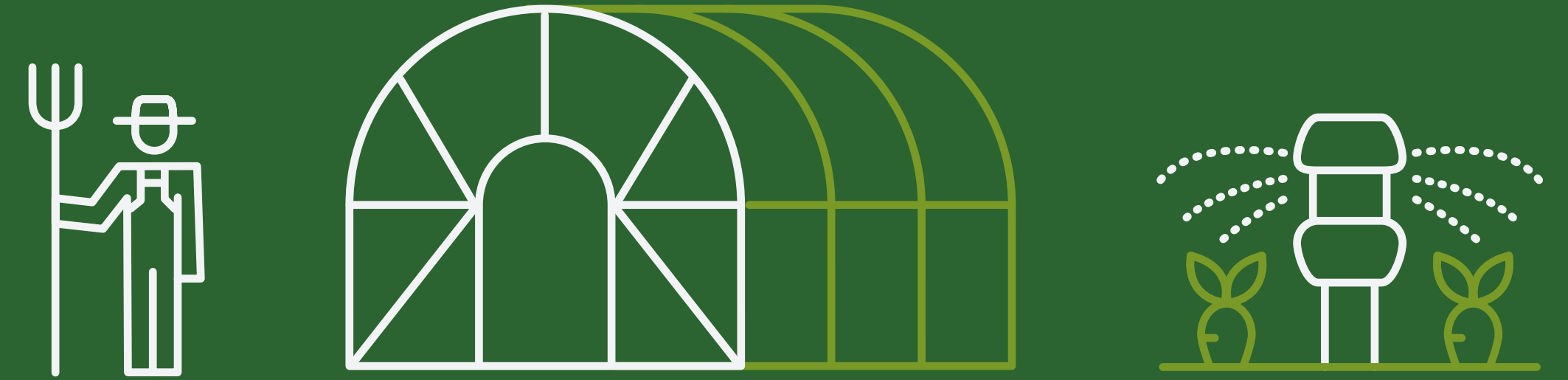
○ The Ministry **promoted adaptation** via advisory service, but it failed to provide additional resources.

○ The Ministry **partially monitored** knowledge transfer via advisory service and cooperation among stakeholders.

- Past **planned measures are still not implemented** (regional testing and demo centres, cataloguing existing knowledge).

Audit opinion of the Court of Audit

- The Ministry of Agriculture, Forestry and Food was **partially efficient** in adapting agriculture to climate change.



The Ministry has prepared an action plan to develop: vulnerability assessment and adaptation strategy.

The Court of Audit proposed 9 recommendations, among them:



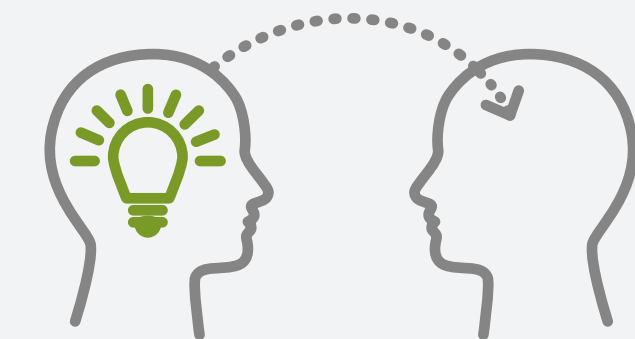
systematic monitoring
of climate change
impacts on agriculture



better monitoring
of adaptation
measures impacts



setting priorities
in research related to
adaptation of agriculture



**improving knowledge
transfer and cooperation**
among public services



Without early response of competent authorities, **we shall be forced to resort to unplanned adaptation** which may cause higher expenses. **Adaptation must thus be strengthened!**

